

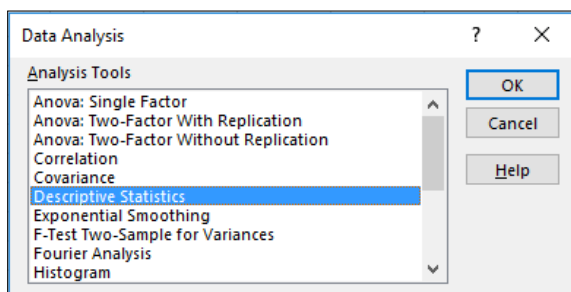
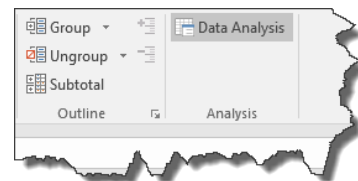


The Analysis Tools

The analysis tools include:

- | | |
|---------------------------------------|---|
| Anova: Single Factor | Random Number Generation |
| Anova: Two-Factor with Replication | Rank and Percentile |
| Anova: Two-Factor without Replication | Regression |
| Correlation | Sampling |
| Covariance | t-Test: Paired Two Sample for Means |
| Descriptive Statistics | t-Test: Two-Sample Assuming Equal Variances |
| Exponential Smoothing | t-Test: Two-Sample Assuming Unequal Variances |
| F-Test Two-Sample for Variances | z-Test: Two Sample for Means |
| Fourier Analysis | |
| Histogram | |
| Moving Average | |

1. Click the **Data** tab, then click **Data Analysis**, located in the **Analysis** group. The **Data Analysis** dialog box will be displayed.



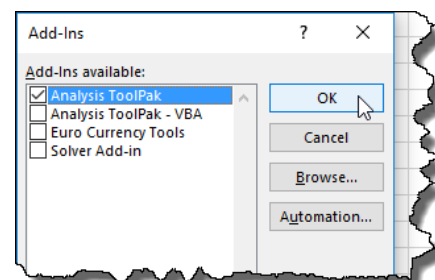
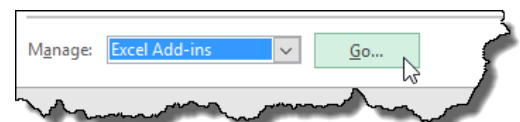
Note:

If the data analysis tools are not available on the **Data** tab, you will need to load the **Analysis Toolpak** add-in program. See below: **Load and activate the Analysis Toolpak**

2. Select the appropriate tool and click **OK**.

Load and activate the Analysis Toolpak

1. Click the **File** tab, then click **Options**. The **Excel Options** are displayed.
2. Click **Add-Ins**, choose **Excel Add-ins** from the **Manage:** box, and then click **Go...**
3. Click **Analysis Toolpak**, listed in **Add-Ins** dialog box and click **OK**.



The **Data Analysis tools** will now be available from the **Data** tab.